

Mazda MX-5 Cup

Drivers Briefing – Finaleraces & American Sunday 2025
TT-Circuit Assen



Welcome



Race Director Team:

Kees Koning / Jaap Molmans
Bobbe Veldkamp / Annemieke Veldkamp

Stewards:

Gerard du Pré / Herman ter Beek
Niels Leermaker

Secretary of the Meeting:

Rutger Griemink
Brigitte ter Velde

Team Relations:

Eric de Jongh

Promotor:

Renata Aartsen
Dick van Elk



Digital Notice Board



Sportity

For direct event information please download the Sportity app and insert this password:

MAZDA2025
VRM2025

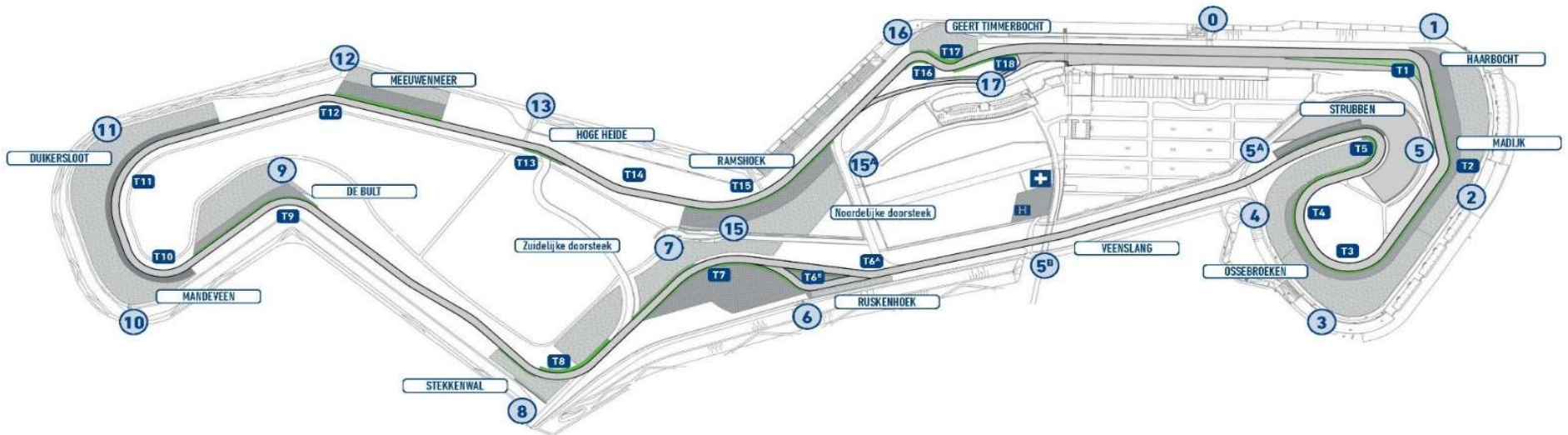
Time schedule P6



Time schedule updates via VRM channel



The Circuit

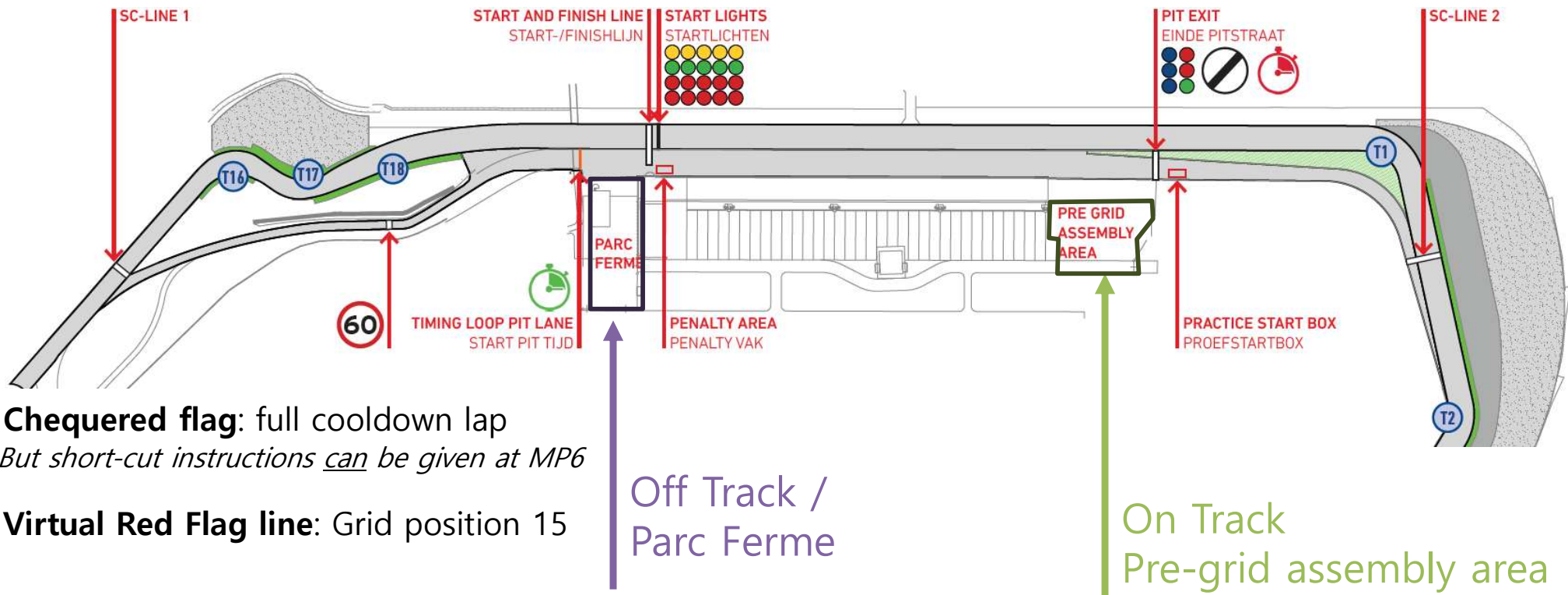


TT-Circuit Assen

- Length: **4.555** meter
- Direction: **Clockwise**
- Start: **Standing start**
- Pole Position: **Left Side**
- Practice starts: **Pit-Exit**
- Penalty Area: **Underneath Podium,**
- Pitlane Speed: **60 KM/H**



Logistics



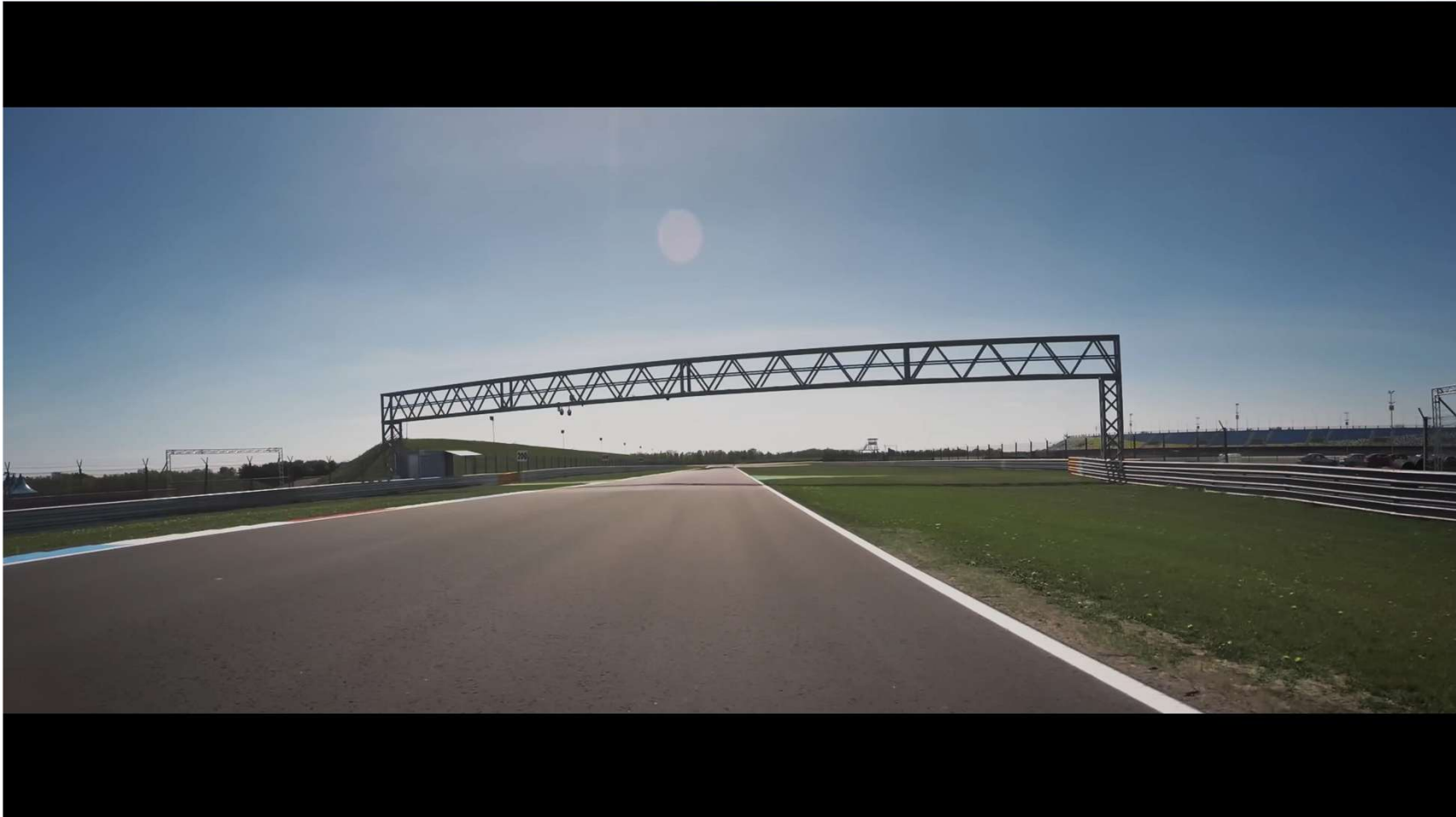
- **Chequered flag**: full cooldown lap
But short-cut instructions can be given at MP6
- **Virtual Red Flag line**: Grid position 15

After Free Practice, cars may go directly to the Pit Box or Paddock. For Qualifying and Races, Parc Fermé rules apply.

All cars must be at the pre-start area **20 min. before** the official session starting time of the races

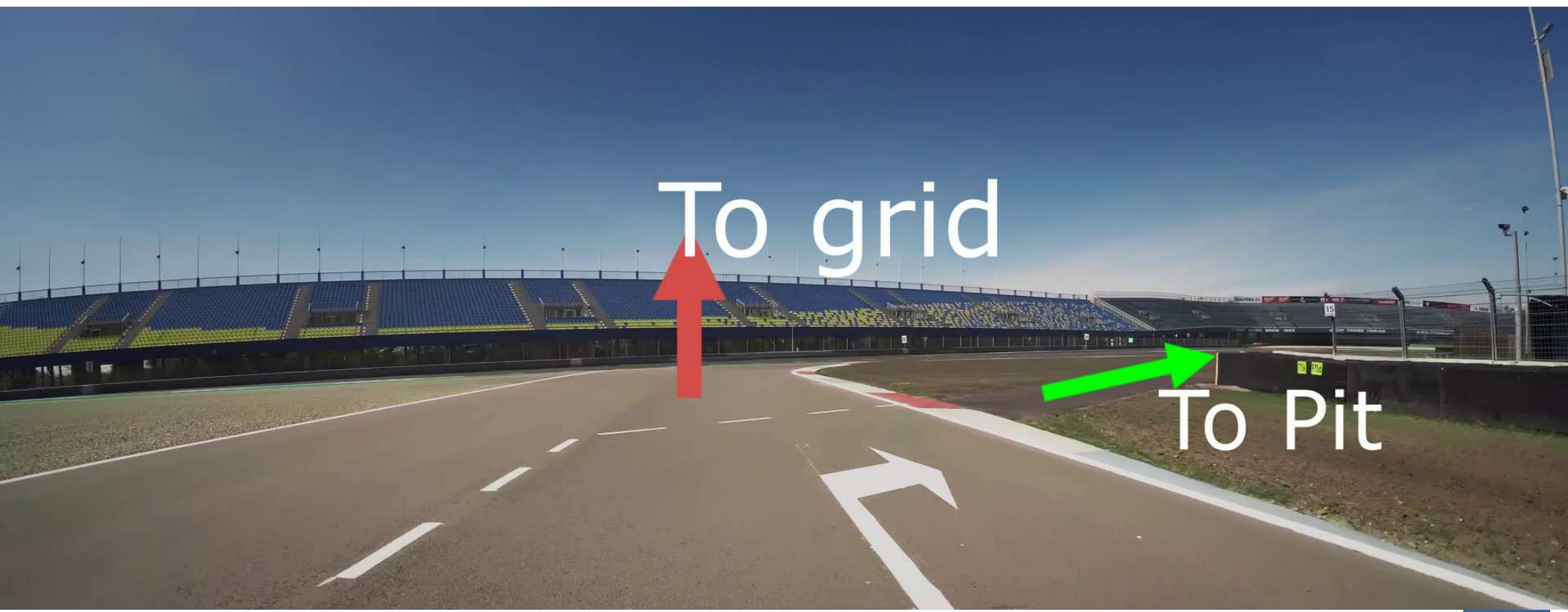
Short route to the GRID/PIT

Or when having a technical problem in Sector 1 / Or when instructed after 



Short route to the GRID/PIT

Or when having a technical problem in Sector 1 / Or when instructed after 

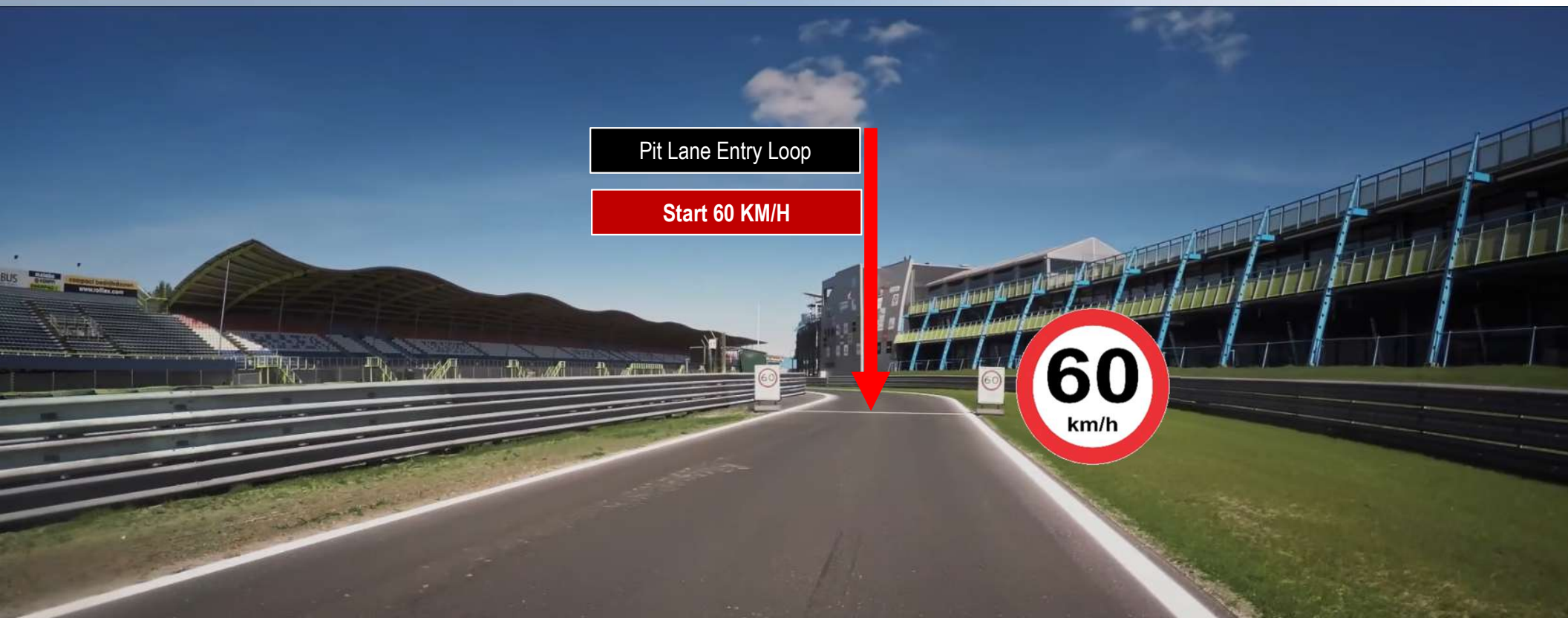


To grid

To Pit



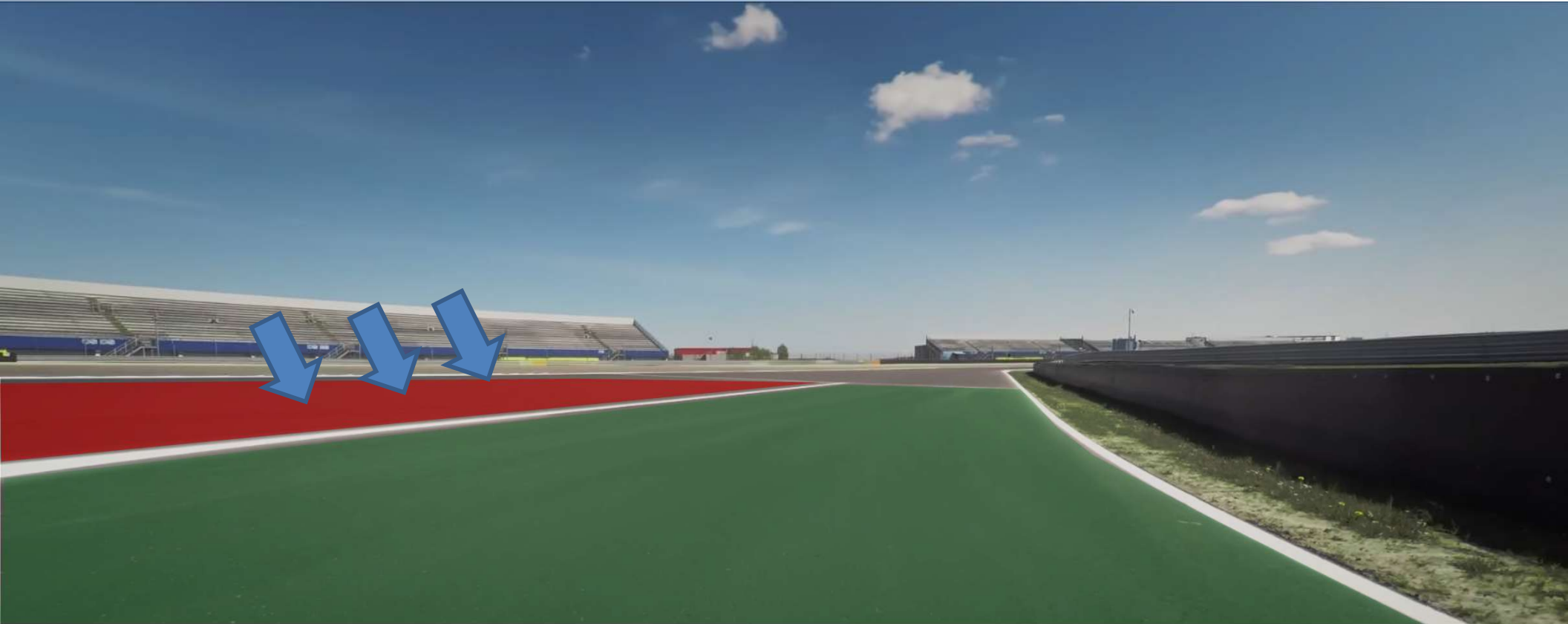
Pit in – 60 KPH



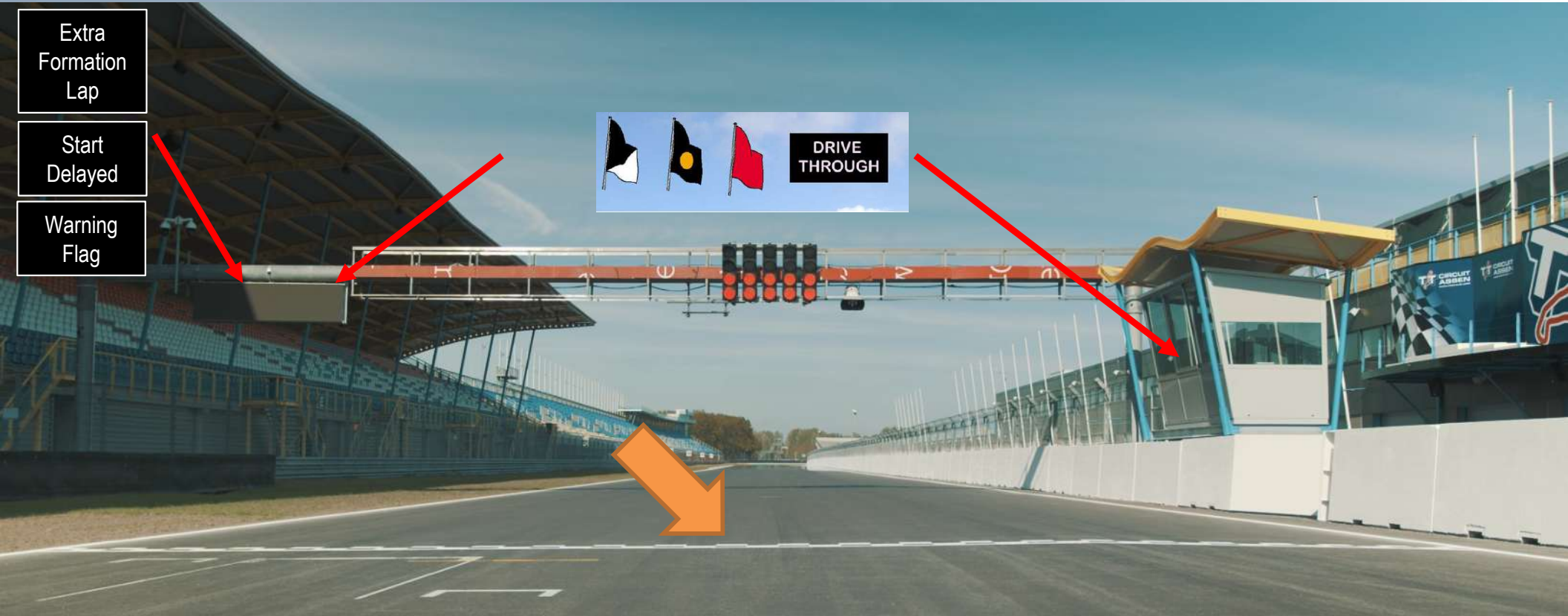
Pit out



White Line Pit Exit



Finish Control Line | Signalling Area



Penalty Box



— Technical Flag (Meatball)



— Black Flag



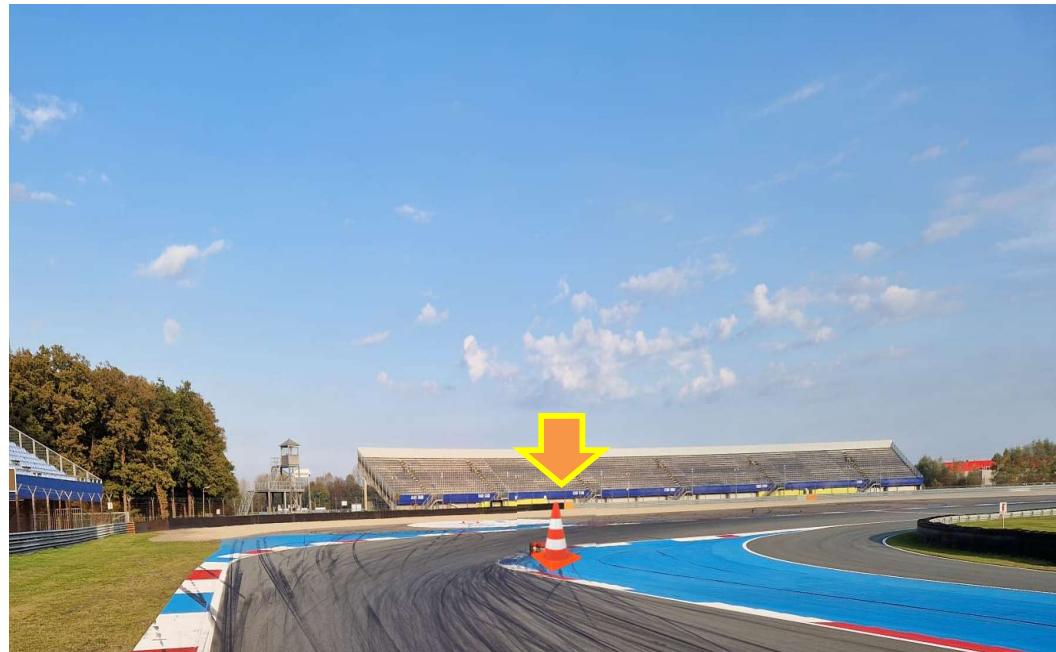
~~— Warning Flag~~

Personal flags can be displayed at other locations, like via LED panels (DigiFlags) trackside around the full track. Obey and respect them directly.

Misbehavior on track in any session could result in penalties for Qualifying and/or Races or next events.

Track Limits T1

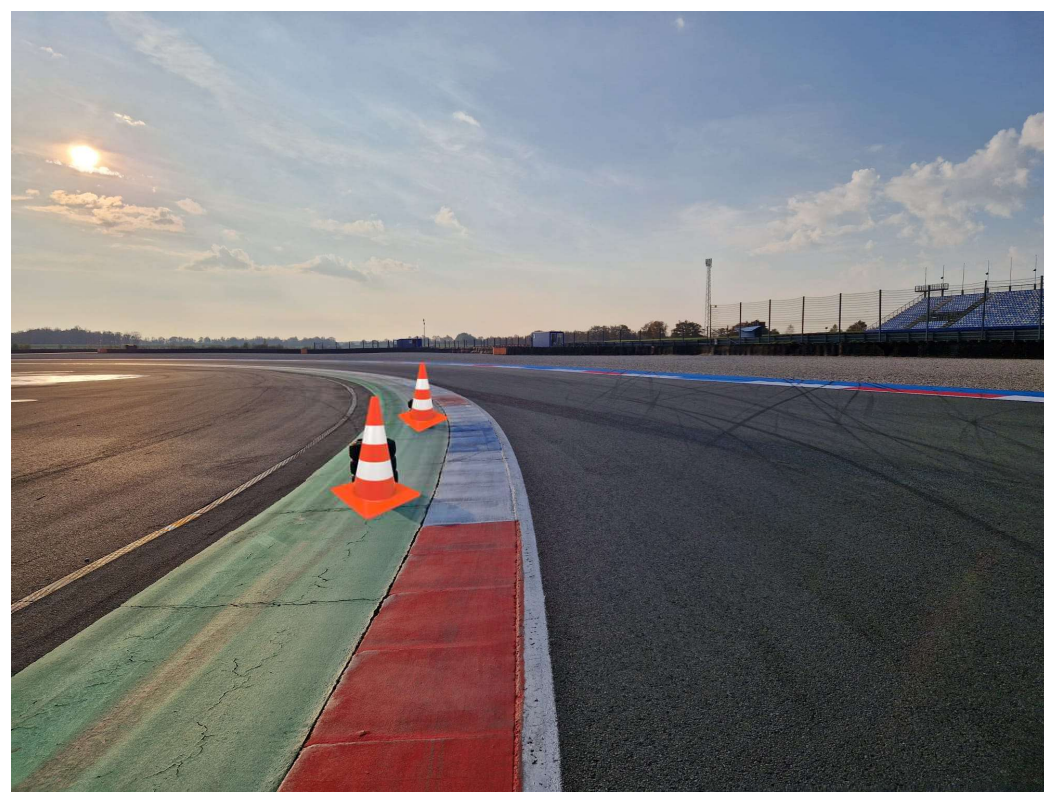
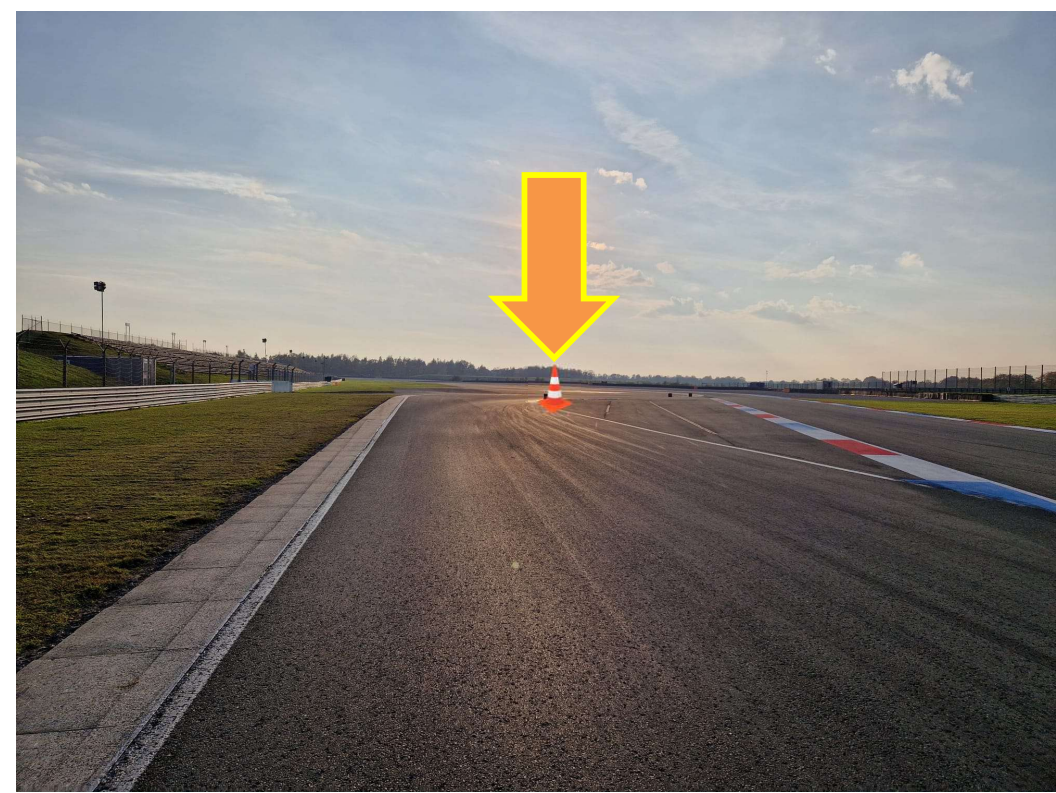
Track limit after red-white-blue kerb
(at exit T1).



Cones indicate the track limits. If the cones are removed, Appendix L applies, or the session may be neutralised



Track Limits T6/T7



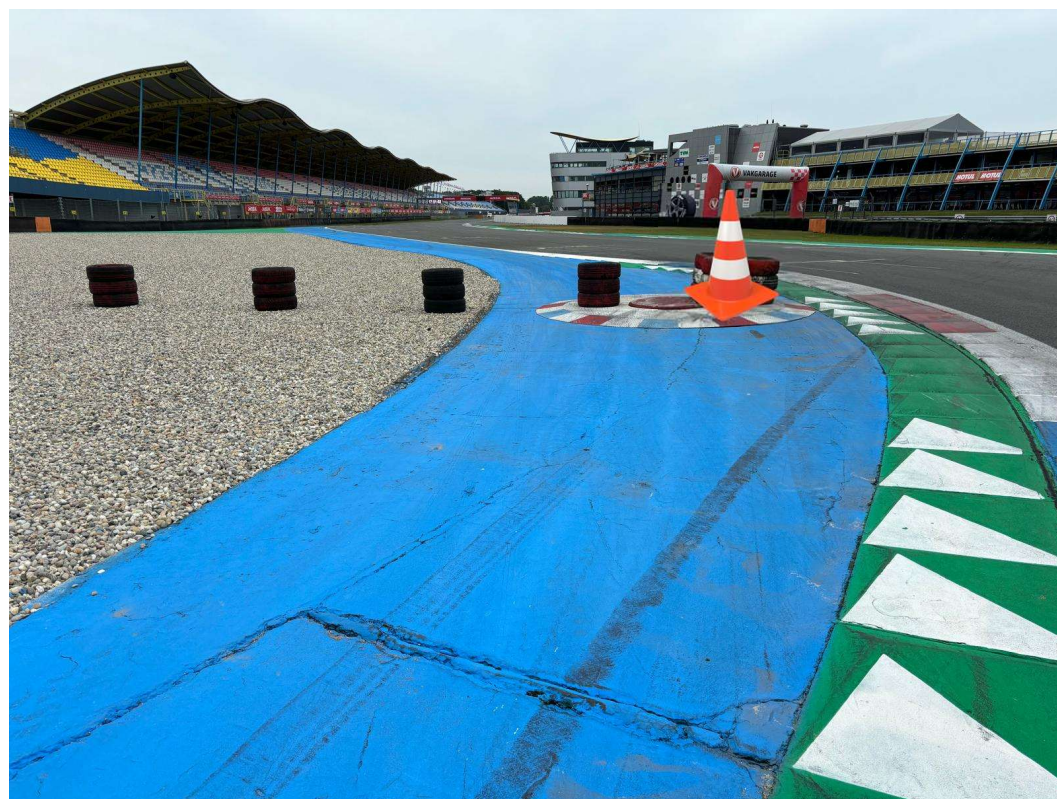
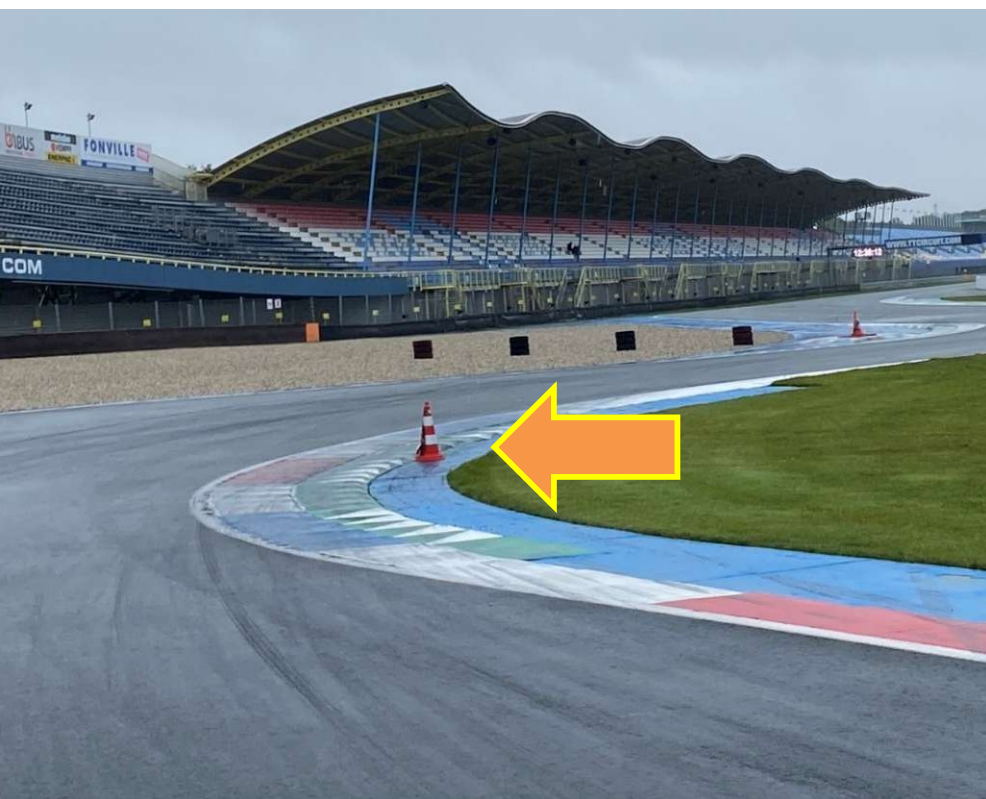
Cones indicate the track limits. If the cones are removed, Appendix L applies or the session may be neutralised

Route at T6/T7



Drivers must stay on the left side of the WHITE line, and merge in a safe way and without any advantage

Track Limits T16/T17



The tyre stacks and cones indicate the track limits.
If the stacks and/or cones are removed, Appendix L applies,
or the session will be neutralised.

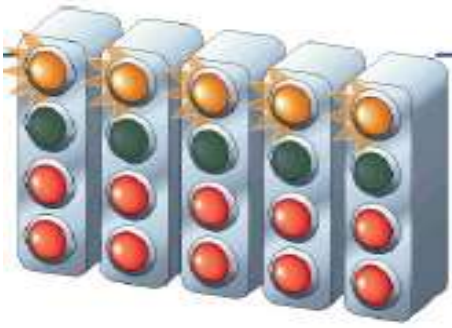
Basics – Starting Procedure



- Know your grid position (before you go on track)
- No tyre trolleys on the grid → Short countdown procedure!
- Wait for the warm-up lap to start (green flag & green lights in gantry)
- Start will be F1 sequence
 - ▶ Red lights out = start race.



Start delayed



- In the occasion of problems on the grid or during the formation lap, the Race Director may decide **not** to start the race.
The start will be aborted.
- In this case, the red lights on the starting gantry remains red and orange lights will flash.
- The sign **Start Delayed** will be displayed
- A new formation lap will follow, when the **green lights** on the gantry have been activated (race time starts, but race competition had not started)

Good to know



Grid position race 1	= Based on Qualifying, with top 10 reversed
Grid position race 2	= Based on <i>Qualifying, best time</i>
Grid position race 3	= Based on <i>Qualifying 2nd best time</i>
Too late	= Start from Pit Lane

Technical problem?	= Please make a sensible discussion (orange marking on guardrails)
Leave the car?	= Stand safe behind the guardrail
Chequered Flag	= Do not overtake in your cooling down lap! Cars may be guided via T5-T6 (Noordelijke Doorsteek) shortcut by officials, and you may be temporarily stopped by an official. Officials can be on track for clean-up for the next session.

First 3 finishers drive to podium (overall), other cars go immediately to Parc Fermé

Respect the safety rules around paddock and pitlane:

- **NO** passengers on the Mazda
- **NO** drifting, weaving, or unnecessary wheelspin.
- **NO** refuelling inside the Pit Garage



Good to know 2



- Make sure you score championship points! (75% of the race distance of the winner)
- Did you do an overtake that might not clean/correct? Give back the position asap!
- No bump-drafting in braking zones
- Weaving and warming up the tyres: look in your mirrors and do not block faster cars (and tyre notes for Scrutineering timely at Parc Ferme)
- Parc Fermé also applies on on-board camera's.
- Make sure the Timing Transponder is fitted correctly
- Flags and Digiflags have the same meaning.
 - In case of contradicting flags: the safety flags go first
- **Track Limit Challengers cannot be used during the races, when the track setup has been changed due to missing/moved cones**
- **In Free Practice 1, some slow cars from the Supercar Challenge will also be on track. The promotor expects similar lap times and no big speed differences.**
- **Respect the Parking spaces for the American Sunday**



MYLAPS RaceLink Club



Mandatory two-way communication device for this event

It does NOT replace your current timekeeping transponder.

Make sure that the timing transponder is fitted correctly!

Race Control can see:

- Live GPS location
- Live GPS speed

Race Control can send:

- Full Course Flags
- Sector Flags (no blue)
- Personal Flags



Fit the Racelink on your (clean) dashboard (and mind the anchoring), and make sure the driver can see the LED's on the front of the Racelink. Additional/alternative installation tips are shared via the Sportivity app.

Note that all cars will have a RaceLink Club. The Racelink is an *assisting* notification device. So...Do you see a Racelink blinking? Look at the marshal post!



MYLAPS RaceLink Club

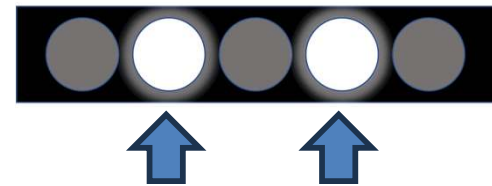


Fit the Racelink on your (clean) dashboard (or an alternative location), and make sure the driver can see the LED's on the front of the Racelink. Additional installation tips are shared via the Sportity app.

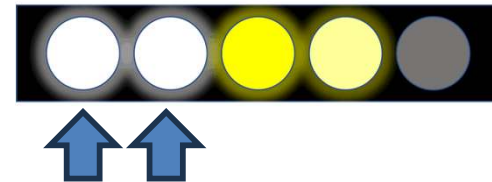
Anchoring the device is important.



SC



FCY



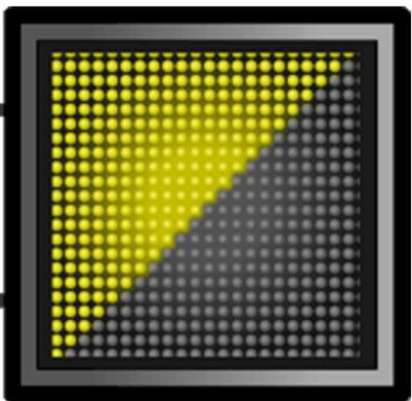
After the last session of each day the RaceLink will be collected in Parc Fermé and you can collect it before the first Session of the next day



Flag signals - Yellow



- Reduce your speed
- Double waved yellows: be prepared to change direction or to make an emergency stop
- Don't drive next to each other in any yellow flag situation
- Overtaking is prohibited until you have passed the green flag.



Flag Signals – FCY



START OF THE FCY PROCEDURE

- YELLOW FLAGS + BOARDS "FCY"
- LED-PANELS (Digiflags) DISPLAY "FCY"
- NO OVERTAKING ALLOWED
- REDUCE SPEED AS QUICKLY AS POSSIBLE
 - IN A SAFE WAY (**but within 10 seconds**)
- WATCH OUT FOR INTERVENTION VEHICLES
- MAX SPEED 80 KP/H
- MYLAPS RACELINK:



ENDING OF FCY PROCEDURE

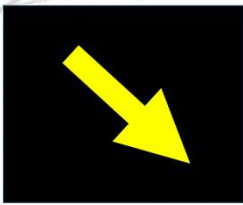
- YELLOW FLAGS AND PANELS DISAPPEAR
- ALL LED-PANELS (Digiflags) GO GREEN
- ALL MARSHALS SHOW GREEN FLAGS
- WHEN YOU **SEE** THE GREEN SIGNAL, OVERTAKING IS ALLOWED IMMEDIATELY

Safety car

SC CAR POSITION

SC CAR 1ST LAP

SC LIGHTS OFF

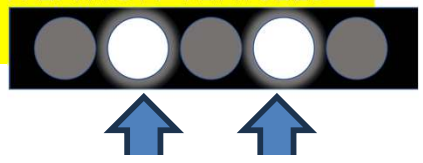


SAFTEY CAR VIA PITLANE (when needed)

- FLASHING LIGHTS STAY ACTIVE
- NO OVERTAKING
- ALL CARS MUST FOLLOW SC INTO PITLANE

SAFTEY CAR PROCEDURE

- YELLOWS FLAGS + BOARDS "SC"
- NO OVERTAKING
- WATCH OUT FOR INTERVENTION VEHICLES
- MYLAPS RACELINK:



END OF SAFETY CAR PROCEDURE

- LIGHTS OFF IN SECTOR 3. **No sudden braking!**
- RESTART FROM THE CONTROL LINE
- 1 single waved green flag
- OVERTAKING ALLOWED AFTER THE CONTROL LINE

Flag Signals – Red Flag



Free Practice & Qualifying

All cars into pitlane

Red Flag in Q **with resumption?**

→ Working on car allowed.

Red Flag in Q and **no restart?**

→ Parc Fermé applies

- Reduce Speed. Be Prepared to Stop!
- Overtaking is forbidden at all times (exception for force majeure)
- Session is Suspended
- Follow Instructions given by officials
- Causing a red flag situation may lead to a severe penalty

Race

All cars into pitlane

Cars must line up, single file, and stop before the red/white line at the Pit Exit Lights.

Cars are under parc fermé conditions (working on the cars is not allowed) until the RD declares to resume the race, behind SC.

Cars in front of the leader can be send out first on track to join back of the pack

Driving Conduct - Sprint spirit



- Achieve proper sportsmanship (also after the race)
- If you can't see a car you were defending position to → the car is still there!
- Leave each other sufficient race room (at least one car width) in cases of close racing
- Don't force your car in positions where there is no space,
→ no dive-bombs, no attempts to squeeze in difficult positions
- Try to think 3 turns, 3 minutes or 3 laps ahead
- Crashes and contacts in motorsport always hurt (your budget.... And maybe even worse)
- Be the best sprint series ambassadors!



Driving Conduct



Examples

- Jumpstart
- Ignoring flag signals or Instructions from marshals
- Overtaking under yellow, red or after chequered flag
- Speeding under FCY, Pit lane, Yellow Flag(s).
- Dangerous driving behaviour with or without contact
- Unsportsmanlike behaviour
- Change direction more than once
- Take advantage of an unclear situation
- Track limits

A penalty can come with extra point(s) on your licence:

- | | |
|-----------|---|
| 5 Points | drop of 3 places on the grid next race |
| 8 Points | drop of 10 places on the grid next race |
| 10 Points | Start from pit lane next race |

Penalties that can be applied

- Deleting (fastest) lap time(s)
- Time penalty
- Position penalty
- Grid penalty
- Starting from pitlane
- **DRIVE THROUGH**
- Stop and Go
- Stewards decisions
 - *Black Flag*
 - *Disqualification*



QUESTIONS?

MAKE IT A SAFE AND SPORTIVE FINAL!

SAFETY – RESPECT – SPORTSMANSHIP

